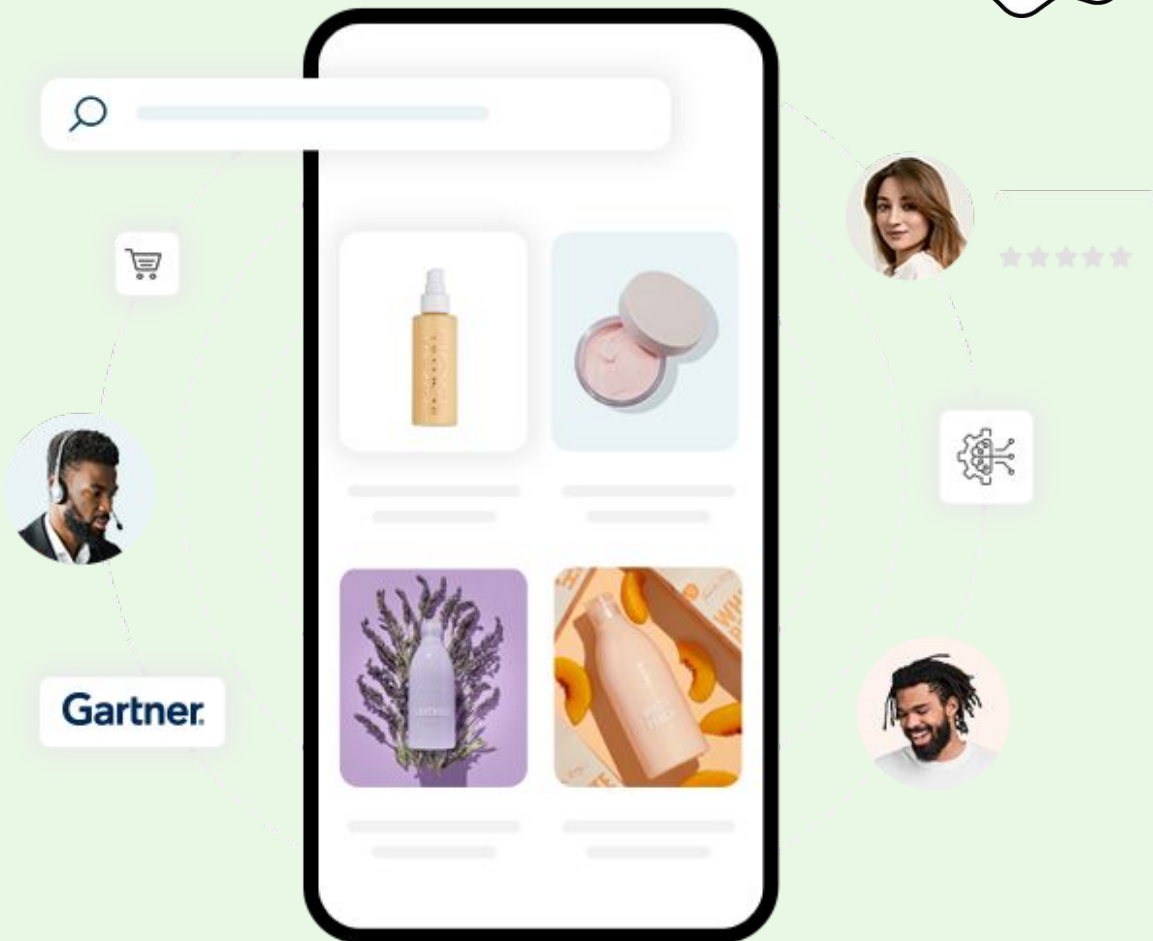




# API Integration

## Checklist





## Search Results Landing Page

- ❑ Fetching Search Results: <https://docs.klevu.com/apis/record-search>
- ❑ Fetching and Applying Facets: <https://docs.klevu.com/apis/faceting>
- ❑ Pagination:  
<https://docs.klevu.com/apis/smart-search-configurations#GSBhk>
- ❑ KMC URL Redirects: <https://docs.klevu.com/apis/url-redirects>
- ❑ KMC Banners: <https://docs.klevu.com/apis/banners>
- ❑ KMC No Results Page Customisations:  
<https://docs.klevu.com/apis/no-results-customisations>
- ❑ Analytics Events: <https://docs.klevu.com/apis/search-events>

## Autocomplete Drop-down

- ❑ Product Suggestions: <https://docs.klevu.com/apis/record-search>
- ❑ Instant Search Suggestions:  
<https://docs.klevu.com/apis/search-as-you-type>
- ❑ Trending Products:  
<https://docs.klevu.com/apis/no-results-customisations> (see **klevu\_popularProductsOfSite**)
- ❑ Popular Searches:  
<https://docs.klevu.com/apis/no-results-customisations> (see **klevu\_webstorePopularTerms**)
- ❑ Analytics Events: <https://docs.klevu.com/apis/search-events>



## Addon: Category Merchandising

- ❑ Fetching Category Results:

<https://docs.klevu.com/apis/smart-category-merchandising-product-search>

**Note:** This is the only difference between a Search API Request and a Category API Request

- ❑ Fetching and Applying Facets: <https://docs.klevu.com/apis/faceting>

- ❑ Pagination:

<https://docs.klevu.com/apis/smart-search-configurations#GSBhk>

- ❑ KMC AB Testing:

<https://docs.klevu.com/apis/smart-category-merchandising-ab-test>

- ❑ Analytics Events: <https://docs.klevu.com/apis/category-events>

## Addon: Recommendation Banners

- ❑ Build Recommendations API request::

<https://help.klevu.com/support/solutions/articles/5000889878-integrating-kmc-recommendations-across-channels>

**Note:** Requires a Recommendation Strategy to have been created within the KMC first:

<https://help.klevu.com/support/solutions/articles/5000871419-recommendation-banne>

- ❑ Analytics Events: [https://docs.klevu.com/apis/recommendations-events\\_r](https://docs.klevu.com/apis/recommendations-events_r)

## Addon: Personalisation

- ❑ Applying personalisation context:

<https://docs.klevu.com/apis/personalisation>



## Connector: Klaviyo

- ❑ Building and Sending Search Events:  
<https://docs.klevu.com/apis/klaviyo-search-events>
- ❑ Applying Klaviyo Segmentation to Recommendation Banner API Requests: <https://docs.klevu.com/apis/klaviyo-segmentation>

## Business Requirements to Consider

- ❑ Multi-currency:  
<https://docs.klevu.com/apis/smart-search-examples#KC6cD>
- ❑ Customer/Group Prices and Product Visibility (B2B):  
<https://docs.klevu.com/apis/smart-search-examples#GI08Z>
- ❑ Fetching non-product content (CMS, Blog, FAQs):  
<https://docs.klevu.com/apis/smart-search-examples#tNXJL>
- ❑ Advanced filtering: <https://docs.klevu.com/apis/advanced-filtering>

## Best Practise

- ❑ Make multiple queries in a single API request:  
<https://docs.klevu.com/apis/smart-search-examples#h9ddG>
- ❑ KB Article:  
<https://help.klevu.com/support/solutions/articles/5000871403-how-to-speed-up-api-responses->